



STEF SHOCK FINE ART



ABOUT THIS SERIES

Stef's work in abstraction fluctuates between abstract painting and fiber art.

With her Torn series, canvas is torn, hand painted and sculpted onto a canvas. The image of the painted line hovering and the shadows created by the 3 dimensional design are reminiscent of topographical maps, fingerprints and the wood rings.

Each piece is 2.5 inches deep from the back of the canvas to the tip of the painted fringe.



MATERIALS

- I start with a vision of the outcome. Will the finished piece be framed in an acrylic shadowbox or a wood frame? The acrylic box provides protection (ideal for commercial spaces) whereas the wood frame enhances the lines within the piece and allows the fiber to be exposed leaving the viewer wanting to touch it (and is my personal favorite).
- The backing and the ribbons are made of canvas. This blends the texture and creates the perfect match in color.
- The ribbons are hand painted with a blend of acrylic paint and alcohol ink. I can do a multitude of colors. The most requested is black for the high contrast effect.





TORN RIBBONS GLOW

A feature that adds a level of magic to this series is the glow that happens when they're positioned near a window. Sun passes through the raw fabric allowing a warm glow to cast. Therefore the painting changes from hour to hour.



IN CONTEXT





FRAMING

You have the option to use your local framer or I can provide the frame for you.

Acrylic Shadow Box - The larger the shadow box, the more I encourage people to speak with their local plastics company. They can custom make a shadowbox frame for substantially less cost than I charge for shipping/handling. Also, once they build it, it's surprisingly easy to attach to the piece.

The shadowbox is higher in price compared to the other frames due to the manufacturer/framer.

Floating Frame - I can provide a wood or metal frame. The wood frame is custom made and stained (the shade of your choosing) by my team. The lowest cost option is made of metal and is popular as it looks very similar to the wood version.

Neither frame is recommended more than the other as they all look great for different reasons.

About

Stef's history in art started at a young age and her training has been a constant throughout her life. The torn series allows Stef to combine her skills in painting and sculpting to create these fiber art pieces.

While professors and coaches have been a large part of her training, her lifestyle is the foundation of what inspires her work. With a 14 year history living in Chicago and NYC plus her year in The Bahamas and extensive travels, her surroundings have been an expanding force in creating the visions she translates into form.

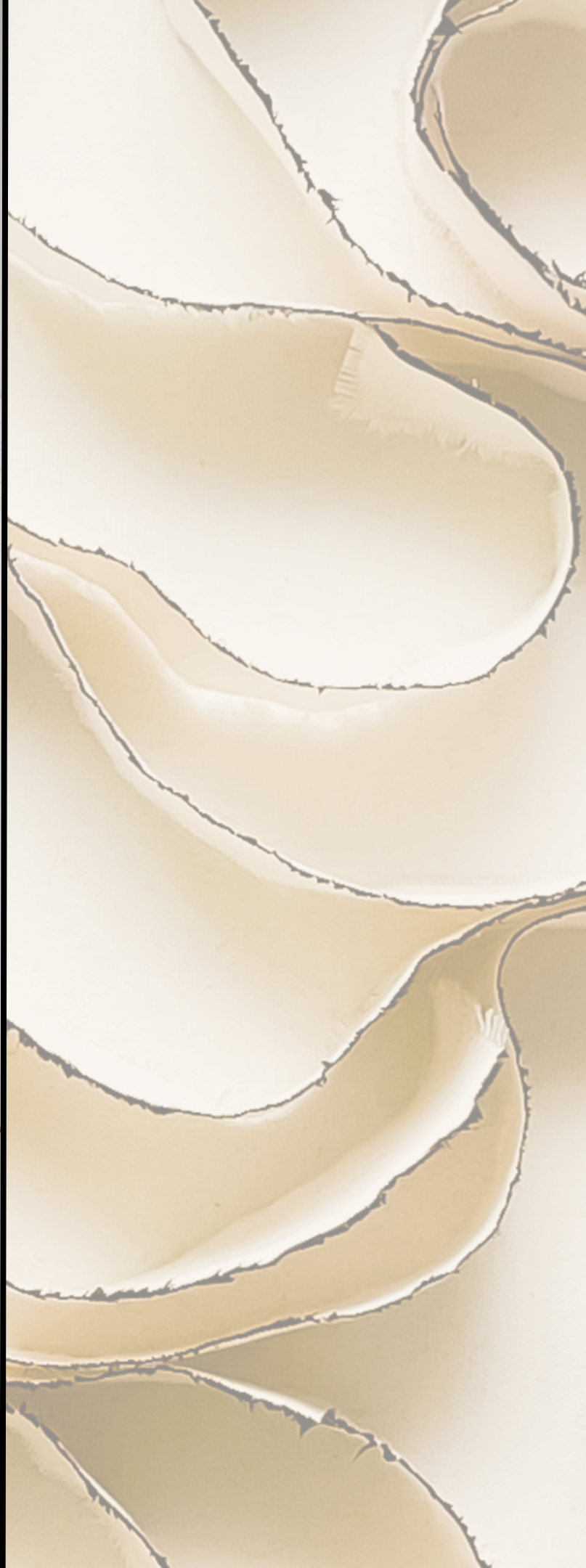


STEF SHOCK FINE ART

www.stefshock.com

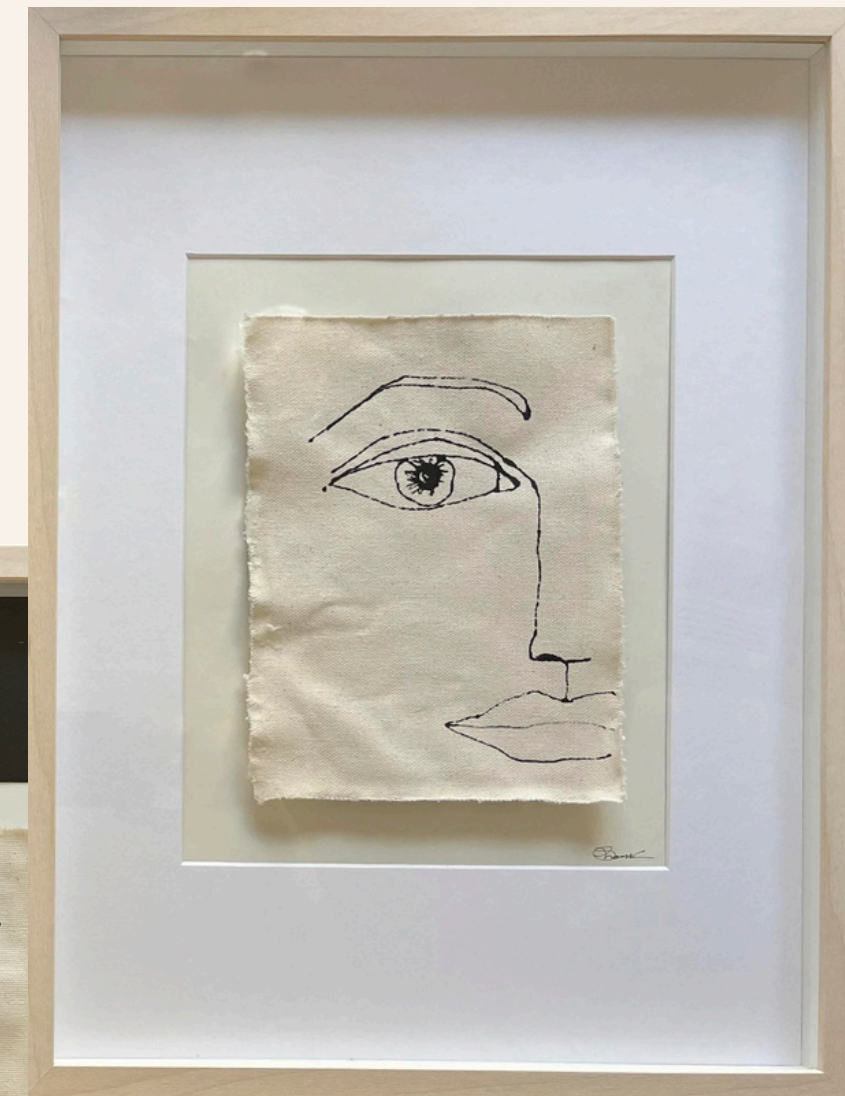
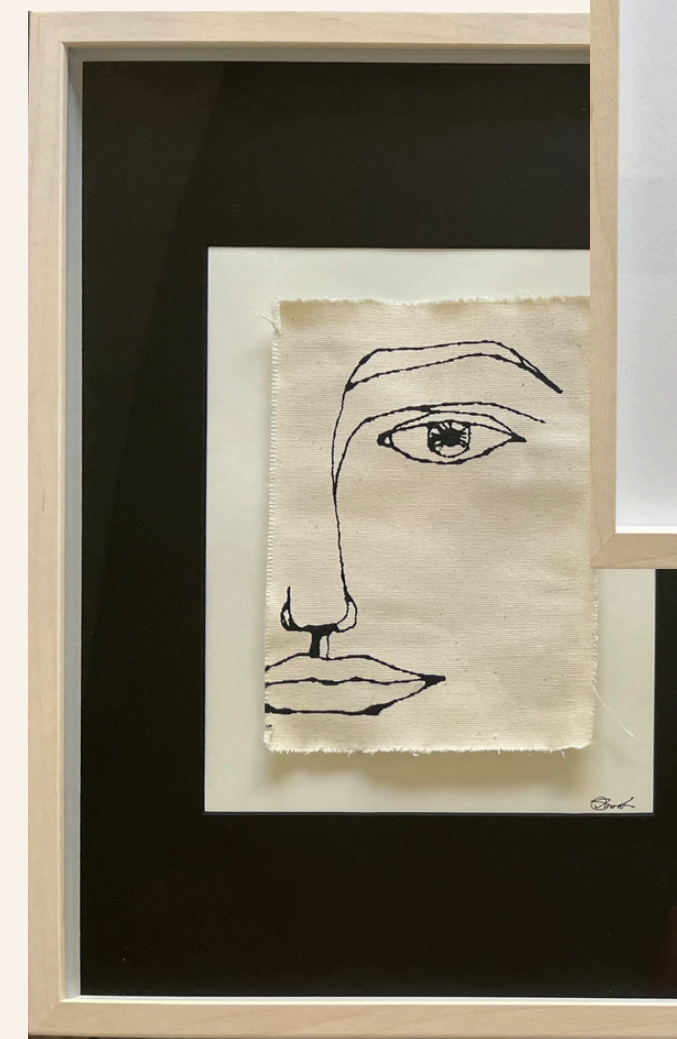






Other Works

Torn Portraits



Other Works

Abstract Paintings &
Works on Paper

